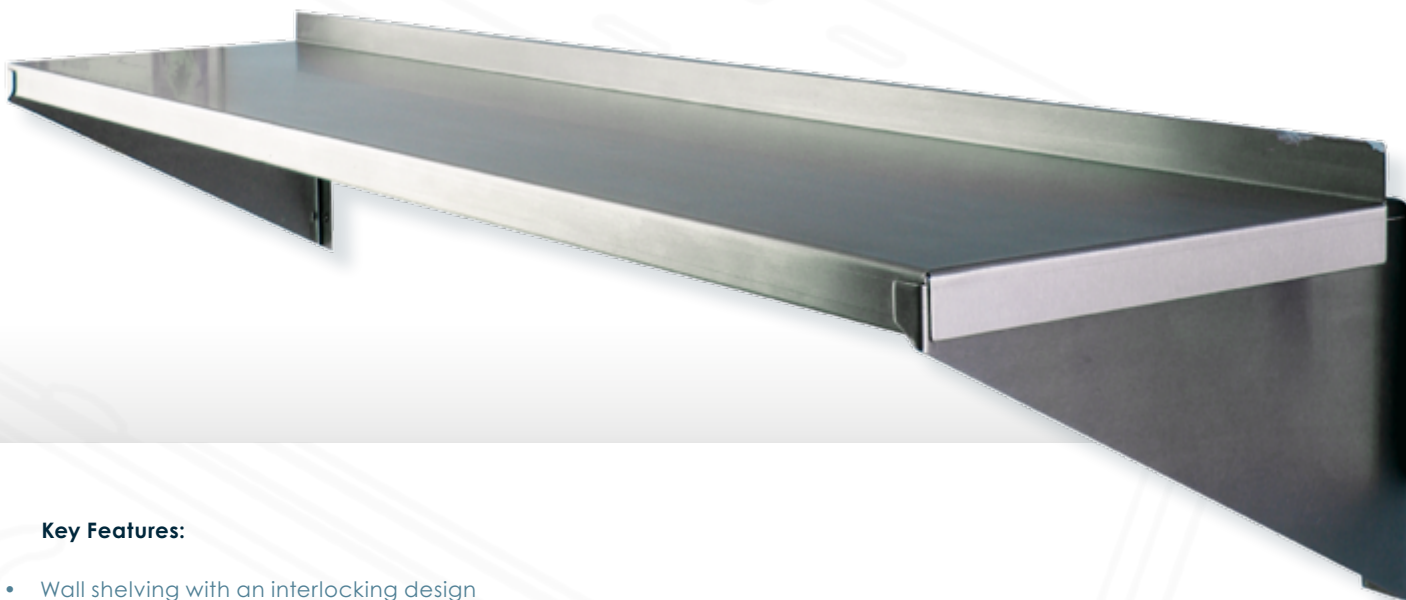


Overview

Wall shelves are perfect for kitchen storage.
Simple and robust with gusset support brackets.
Each wall shelf type has a 35 mm deep turn down to 3 faces and a rear wall up stand of 40 mm.



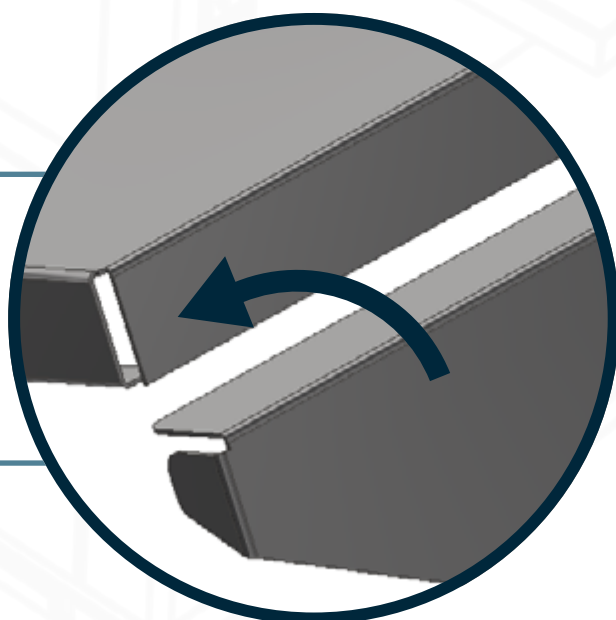
Key Features:

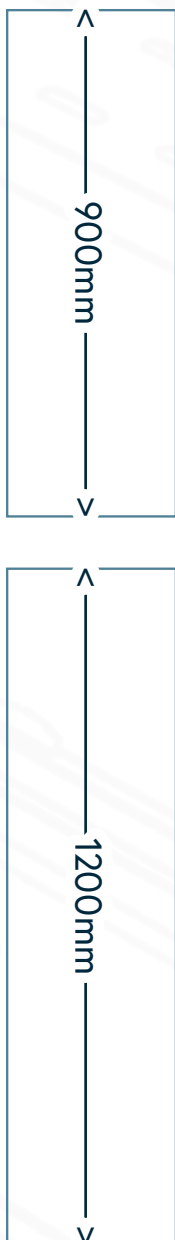
- Wall shelving with an interlocking design
- This unique design allows the shelf to be lifted away from the wall brackets
- Easy clean solid surface meets food hygiene standards
- A weight capacity of 50kg for every 1000mm in length depending on wall fixings
- Usable area: Length x 285mm
- All stainless-steel construction
- Complete with anchor point for wall fixing
- Note Wall fixings are not supplied



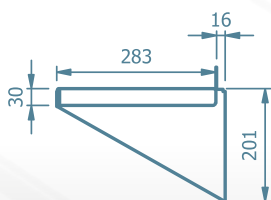
Innovation:

Unique interlocking design lift of shelf for deep cleaning no tools required.





End View



E&R Moffat Ltd.
Bonnybridge
FK4 2BS
Scotland

Find us on:



www.ermoffat.co.uk
+44 (0) 1324 812272
sales@ermoffat.co.uk