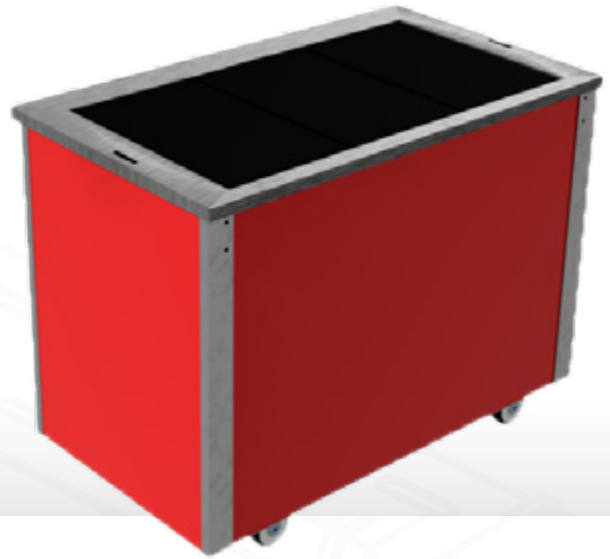


## Overview

Hot display with individual, Neo-Ceram glass, GN 1/1 size, self regulating thermo panels, with a hot cupboard under fitted with Moffat's renowned innovative sahara fan heating cell. Easily removable for cleaning and maintenance. Designed to maintain pre-heated, cooked food at a regulated temperature. Suitable for the display of most types of hot foods, The hotcupboard is designed to accommodate GN1/1 size gastronom type pans. The neo-ceram hot top is not an induction type unit which require dedicated food pans, and apart from cast iron can be used with any suitable heatproof food container. Chafing dishes are not required. The hot top surface temperature regulates around 95° hot cupboard controlled by a 30° to 110° thermostat.



## Key Features:

- Fast heat up and recovery time.
- Thermostatically controlled hot cupboard
- Unique, removable, forced air heating cell.
- Low maintenance, easily cleaned and highly efficient
- Simple self regulating hot top
- Guaranteed evenly distributed heat with no hot spots
- Even flat surface with no distortion or discolouring
- 4 models in the range holding 2 to 5 GN 1/1 gastronorm type containers.
- Various types of flat bottom dishes can be used.
- 24 hour operation
- Plug and Go, complete with 2 metre long power cable and 13amp plug
- Fully insulated
- Mobile all swivel castors two with brakes

## Options:

- Various heated / illuminated overhead gantry options
- Wide choice of coloured outer panels (durable plastic coated steel)
- Heavy duty spiked stainless steel carving pad (Code: VCCP)
- Fold down solid tray slide or tubular tray rail

## Note:

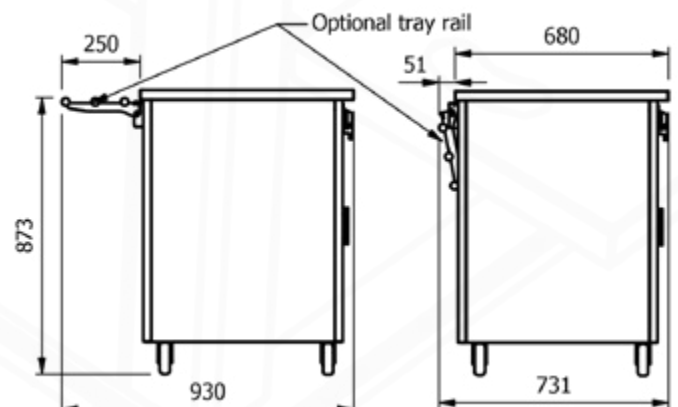
Low height models are available set at 800mm high. Ideal for children up to 12 years. These low height models have a "B" added to the model code.

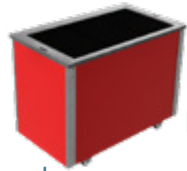
## Optional solid tray slide

| Model | Matching unit size |
|-------|--------------------|
| VC2TS | 2                  |
| VC3TS | 3                  |
| VC4TS | 4                  |
| VC5TS | 5                  |

## Optional tubular tray rail

| Model | Matching unit size |
|-------|--------------------|
| VC2TR | 2                  |
| VC3TR | 3                  |
| VC4TR | 4                  |
| VC5TR | 5                  |





| Model                  | GN 1/1 Capacity | Weight (kg) | L x W x H (mm)   | Hot Plates (kw) | Hotcupboard (kw) | Electrical Supply | Power Rating (kw) | Rating with gantry (kw) |
|------------------------|-----------------|-------------|------------------|-----------------|------------------|-------------------|-------------------|-------------------------|
| Base Unit<br>No Gantry | VC2HT           | 2           | 830 x 680 x 900  | 2 x 0.18w       | 0.9              | 13amp             | 1.26              | 1.48                    |
|                        | VC3HT           | 3           | 1158 x 680 x 900 | 3 x 0.18w       | 1.5              | 13amp             | 2.04              | 2.48                    |
|                        | VC4HT           | 4           | 1486 x 680 x 900 | 4 x 0.18w       | 1.5              | 13amp             | 2.22              | 2.88                    |
|                        | VC5HT           | 5           | 1814 x 680 x 900 | 5 x 0.18w       | 0.9              | 13amp             | 1.80              | 2.68                    |

### Gantry options

Curved glass type, open or closed front with quartz heated and illuminated gantry



| Open Front | Closed Front | Height above top (mm) | Number of 220w lamps | Power Rating (kw) |
|------------|--------------|-----------------------|----------------------|-------------------|
| VC2QG      | VC2QGF       | 405                   | 1                    | 0.22              |
| VC3QG      | VC3QGF       | 405                   | 2                    | 0.44              |
| VC4QG      | VC4QGF       | 405                   | 3                    | 0.66              |
| VC5QG      | VC5QGF       | 405                   | 4                    | 0.88              |

Square glass type, open or closed front with quartz heated and illuminated gantry



| Open Front | Closed Front | Height above top (mm) | Number of 220w lamps | Power Rating (kw) |
|------------|--------------|-----------------------|----------------------|-------------------|
| VC2QGSL    | VC2QGSLF     | 405                   | 1                    | 0.22              |
| VC3QGSL    | VC3QGSLF     | 405                   | 2                    | 0.44              |
| VC4QGSL    | VC4QGSLF     | 405                   | 3                    | 0.66              |
| VC5QGSL    | VC5QGSLF     | 405                   | 4                    | 0.88              |

Deli curved or square glass type, closed front with quartz heated and illuminated gantry [Note the shelf is not heated]



| Open Front | Closed Front | Height above top (mm) | Number of 220w lamps | Power Rating (kw) |
|------------|--------------|-----------------------|----------------------|-------------------|
| VC2QGD     | VC2QGDSL     | 538                   | 1                    | 0.22              |
| VC3QGD     | VC3QGDSL     | 538                   | 2                    | 0.44              |
| VC4QGD     | VC4QGDSL     | 538                   | 3                    | 0.66              |
| VC5QGD     | VC5QGDSL     | 538                   | 4                    | 0.88              |

Island curved or square glass type, with quartz heated and illuminated gantry



| Open Front | Closed Front | Height above top (mm) | Number of 220w lamps | Power Rating (kw) |
|------------|--------------|-----------------------|----------------------|-------------------|
| VC2QGi     | VC2QGiSL     | 405                   | 1                    | 0.22              |
| VC3QGi     | VC3QGiSL     | 405                   | 2                    | 0.44              |
| VC4QGi     | VC4QGiSL     | 405                   | 3                    | 0.66              |
| VC5QGi     | VC5QGiSL     | 405                   | 4                    | 0.88              |



MADE IN BRITAIN

E&R Moffat Ltd.  
Bonnybridge  
FK4 2BS  
Scotland

Find us on:



1963 - 2018

www.ermoffat.co.uk  
+44 (0) 1324 812272  
sales@ermoffat.co.uk