

Overview

This compact mobile dolly is perfect for transporting baskets. Use to convey dishwash baskets in a busy kitchen. Move baskets with clean glasses and crockery from the wash up area to front of house. Satin finish all stainless steel construction mounted on all swivel castors two fitted with brakes.

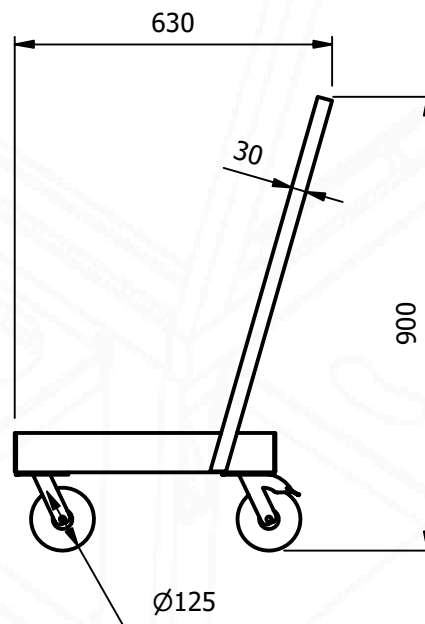
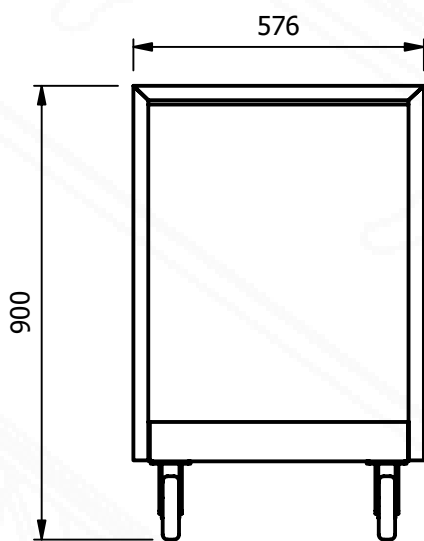
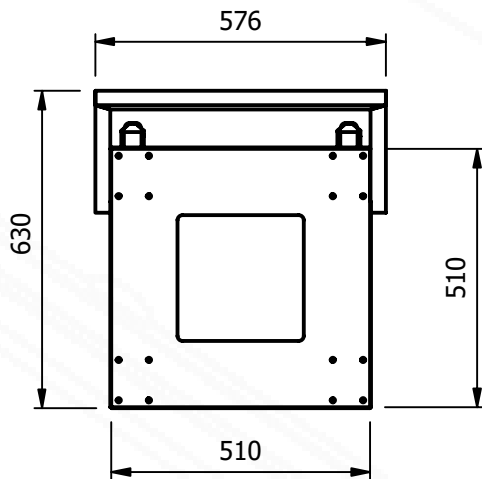
**Model MLL1****Key Features:**

- All Stainless steel construction
- Four swivel castors two with brakes



Model MLL1

Length (mm)	Depth (mm)	Height (mm)	Weight (Kg)
630	576	900	14



E&R Moffat Ltd.
Bonnybridge
FK4 2BS
Scotland

Find us on:



www.ermoffat.co.uk
+44 (0) 1324 812272
sales@ermoffat.co.uk