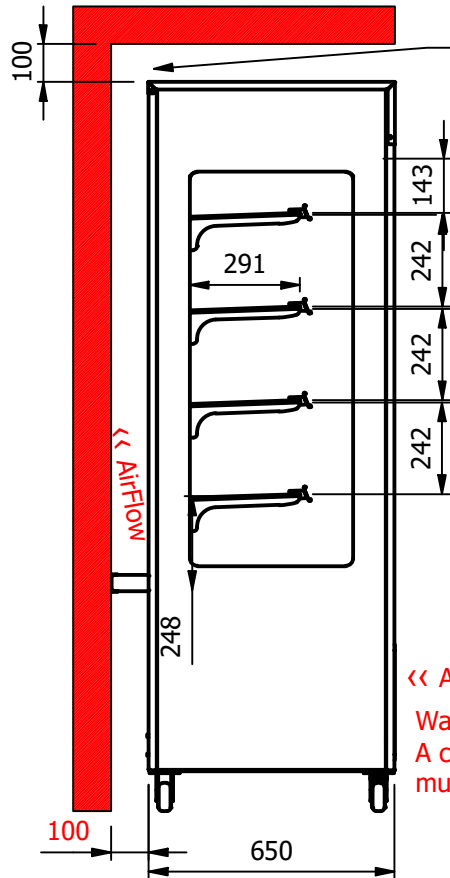


**Important Design Parameters**

Allowances must be made for air venting.  
The under slung compressor must have an unrestricted air flow.  
Vents must not be blocked, cool air from the room is drawn in through the front condensing coil and out the rear

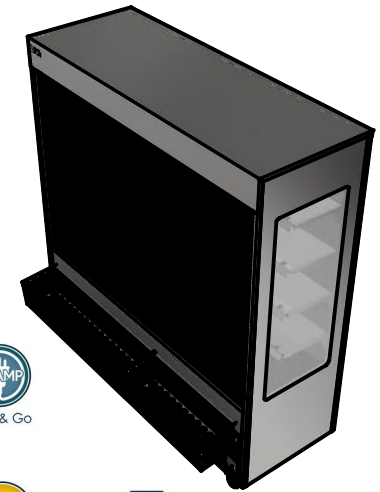
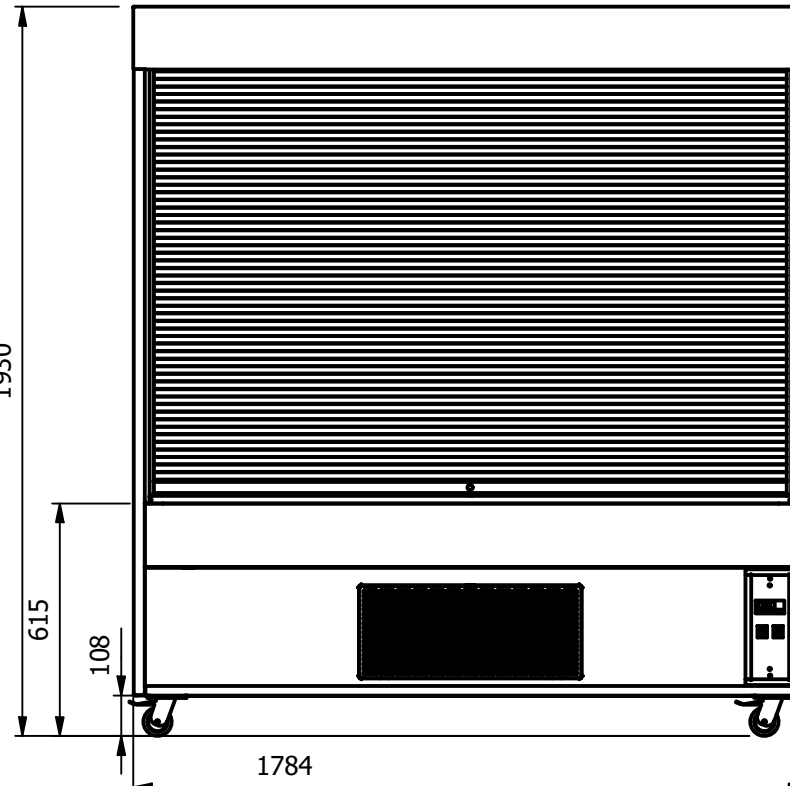
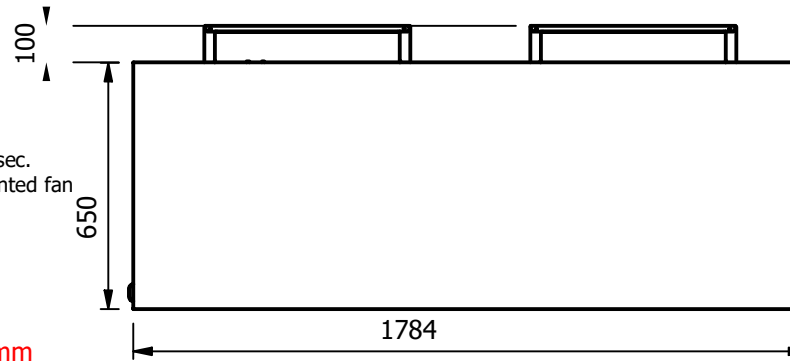
**Warning**

Do not install unit in draughty conditions where the air movement is greater than 0.2mtr/sec.  
e.g.near entrance/exit doors, open windows, under air conditioning units or a ceiling mounted fan  
Do not install units where there is high radiated heat,  
e.g. direct sunlight, room heaters, or bright spot lights.  
Ambient room conditions must not exceed 25°C or a relative humidity of 60%.  
Blocked vents will cause reduced refrigeration efficiency and lead to malfunction



A clear air space of at least 100mm must be left between the unit and the rear wall

Warning  
A clear space of 600mm must be left in front of this unit



**Moffat Specification**

**Dimensions**

Width - 1784mm  
Depth - 650mm [750mm]  
Height - 1930mm  
Weight - 310kg

**Capacity**

4 shelves & bottom deck = 0.56m3 or 560 Litres

**Power Rating**

2.0 kw  
complete with a 2m long cord set & 13amp plug

**Materials**

0.7mm 430 Grade St/Steel inner panels  
1.2mm 304 Grade St/ Steel structure  
1.2mm 430 Grade St Steel Ancillary Parts  
Double Glazed Tempered Glass  
LED Illumination

**Installation**

Mobile with all swivel castors two braked

ALL SHEET METAL DIMENSIONS ARE I/S (INSIDE SIZES) (UNLESS OTHERWISE STATED)

ALL DIMENSIONS IN (mm), TOLERANCE = LINEAR ± 0.5mm, ANGULAR ± 0.5mm (OR AS STATED). ALL SHARP EDGES TO BE REMOVED FROM SHEET METAL PARTS

Product	MERCHANDISER			Product No	N/A			<p>The Catering Equipment Company</p>				
Description	ML5SA			Desp/Date								
Material/Finish	Thickness		Weight	310kg	Quote No.			Dwg No.	GGP-080774	Issue		
Legacy P/N					SO Number	N/A		Drawn By	ABurns	-		
Client					Approved By			Date	19/12/2019			
Client Project								Scale	1 : 20	Sheet	1 / 2	A4