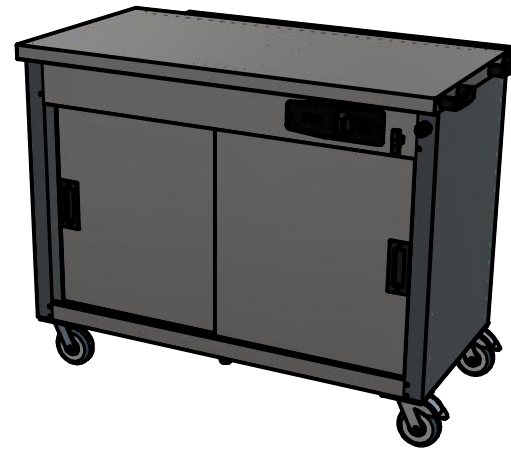
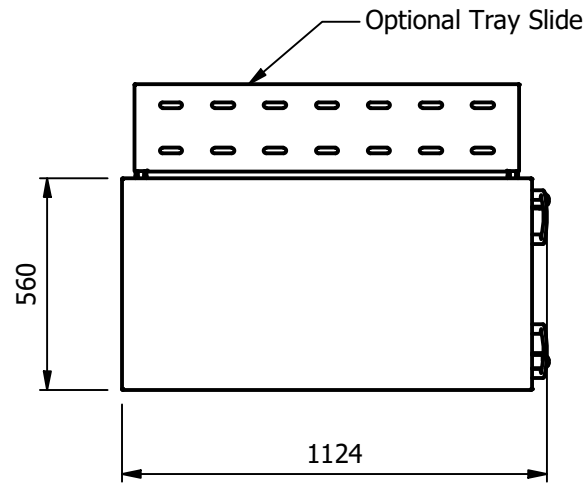
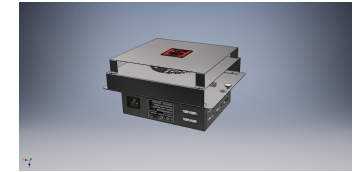


Sahara Fan Model SF315



Moffat Specification

Dry Heat
Fan Assisted Hotcupboard

Dimensions
Length - 1124mm
Depth - 560mm (610mm with folded tray slide)
Height - 868mm
Weight - 52kg

Capacity of Hot Cupboard [usable inside space]
Length - 981mm
Depth - 538mm

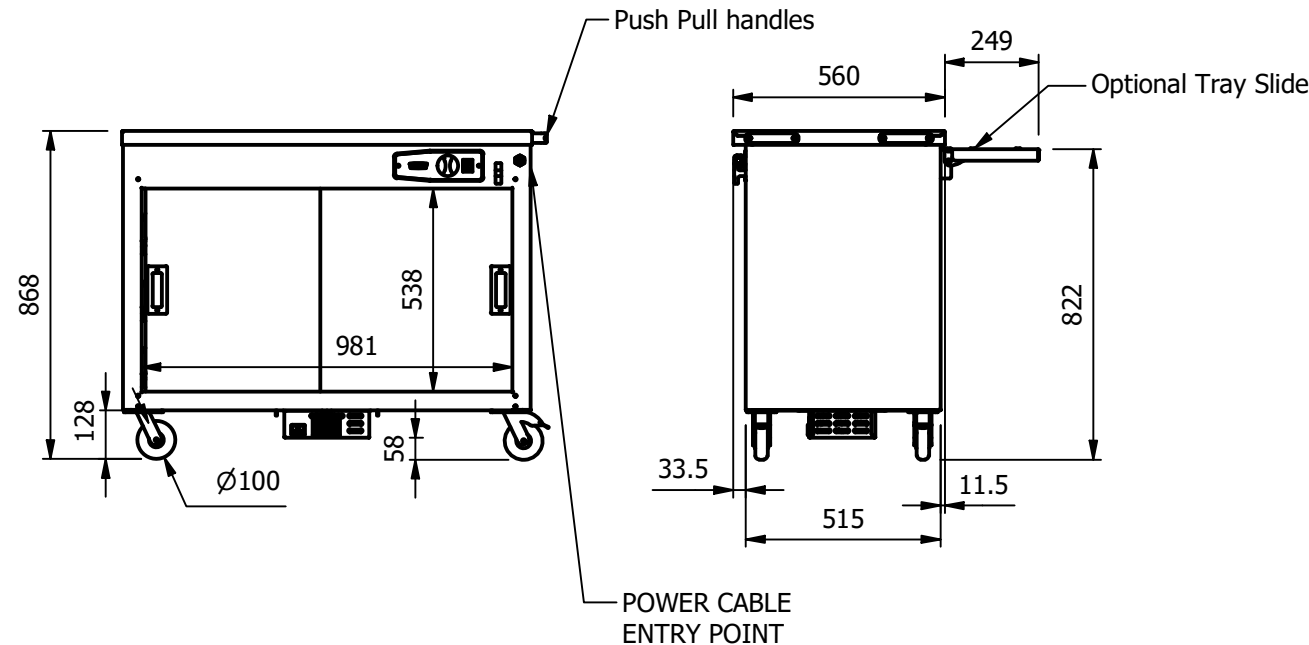
Fitted with three removable shelves
usable height between shelves 154mm

24 covers & meals [10" plated meals stacked using plate covers]
or
72 off 10" plates stacked for heating
or
16 Standard Grundy tins (409mm x 267mm x 57mm)
or
9 off 150mm deep 1/2GN pans side by side.

Power Rating
1.5kw
complete with a 2m long cord set & 13amp plug
Removable Fan heating System Sahara Fan Model SF315

Materials
1.2mm 304 Grade St/ Steel Top & Supports
0.7mm 430 Grade St/ Steel Internal Structure

Installation
All swivel castors, two braked



ALL SHEET METAL DIMENSIONS ARE I/S (INSIDE SIZES) (UNLESS OTHERWISE STATED)

ALL DIMENSIONS IN (mm), TOLERANCE = LINEAR ± 0.5mm, ANGULAR ± 0.5mm (OR AS STATED). ALL SHARP EDGES TO BE REMOVED FROM SHEET METAL PARTS

Product	MH9			Product No				
Description	*** MH9 ***							
Material/Finish	Thickness				Desp/Date			
Legacy P/N	Weight	52kg			Quote No.			
Client					SO Number	STANDARD		
Client Project					Approved By			
E & R MOFFAT LTD, SEABEGS ROAD, BONNYBRIDGE, FK4 2BS, T: +44 (0)1324 812272, E: sales@ermoffat.co.uk, Web: www.ermoffat.co.uk					Dwg No.	UMP-092591-1		Issue
					Drawn By	N.Raymen		-
					Date	19/01/2021		
					Scale	1 : 20		Sheet 1 / 2 A4

No reproduction or publication of this drawing may be made, and no article may be manufactured or assembled in accordance with this drawing without prior written consent. This prohibition is a term of any contract relating to this drawing. Rights reserved under the Copyright Act 1956 as amended by the Design Copyright Act 1968.

