

## Overview

Robust over-shelving with Quartz lamp heating, Cleverly designed offering a choice of one, two, or three tiers. Standard lengths are made to suit the Moffat Premier range of hot cupboard and Bainmarie, creating a functional heavy duty kitchen pass.

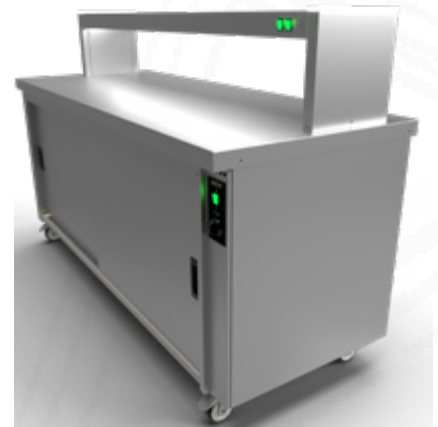
The pass facilitates an easy two-way communication work station between restaurant front of house and the kitchen, where checks are placed and orders processed. Chefs plate up and place on the pass to be served if there's a delay plated food is held warm under the heat lamps. Complete with on off switches to each level as standard or can be fitted with an optional dimmer to control the lamps, alternatively an energy saving timer switch. The Unique horizontal illuminated bands on the end sections at each level provide an aesthetic style when seen from the dining room.



Two tier shown with Hot cupboard & Bainmarie

## Key Features:

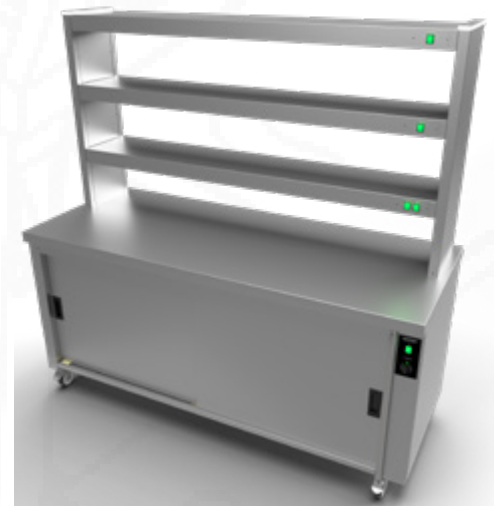
- Flexible choice off one, two, or three, tier design.
- Available in five standard lengths
- Standard sizes specific to Moffat Premier Hot cupboard and Bainmarie units.
- Alternative lengths and configuration are available priced on application.
- Heavy duty robust 300mm wide shelving
- Low maintenance, easily cleaned and highly efficient.
- Attractive Illuminated end sections indicates service is “on”
- 24 hour operation.
- Supplied with a 2 metre long power cable and plug as standard
- Alternatively the units can be supplied hard wired into a Moffat supporting unit.



One tier shown with Hot cupboard

## Options:

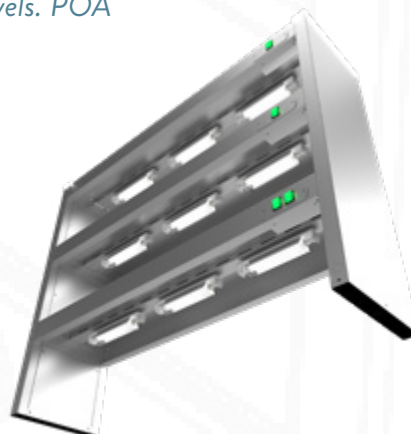
- Tab grabber (code:- MJG)
- Dimmer control lamps (Code:- DMC)
- Time delay switch for energy saving (Code:- TDS)
- 13amp sockets fitted to inner side Code:-SSO)
- Alternative lengths. POA
- Mixed configurations heated / non heated levels. POA



Three tier shown with Hot cupboard



Featuring unique horizontal illuminated end sections indicating service is on as well as providing an aesthetic style when seen from the dining room.



## Gantry options

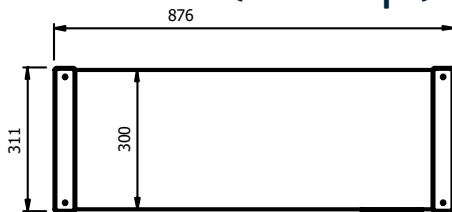
Heated models to suit Premier Hot cupboards and Bainmaries.

	Model	Model Size	Weight (kg)	L x W x H (mm)	Number of 220w lamps	Electrical Supply	Power Rating (kw)
One Tier	KP2H1	2	8	876 x 311 x 322	2	13amp	0.44
	KP3H1	3	11	1196 x 311 x 322	3	13amp	0.66
	KP4H1	4	15	1492 x 311 x 322	4	13amp	0.88
	KP5H1	5	18	1796 x 311 x 322	5	13amp	1.10
	KP6H1	6	22	2146 x 311 x 322	6	13amp	1.32

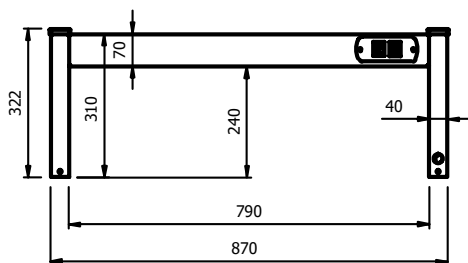
	Model	Model Size	Weight (kg)	L x W x H (mm)	Number of 220w lamps	Electrical Supply	Power Rating (kw)
Two Tier	KP2H2	2	16	876 x 311 x 632	4	13amp	0.88
	KP3H2	3	22	1196 x 311 x 632	6	13amp	1.32
	KP4H2	4	28	1496 x 311 x 632	8	13amp	1.76
	KP5H2	5	34	1796 x 311 x 632	10	13amp	2.20
	KP6H2	6	40	2146 x 311 x 632	12	13amp	2.64

	Model	Model Size	Weight (kg)	L x W x H (mm)	Number of 220w lamps	Electrical Supply	Power Rating (kw)
Three Tier	KP2H3	2	24	876 x 311 x 942	6	13amp	1.32
	KP3H3	3	32	1196 x 311 x 942	9	13amp	1.98
	KP4H3	4	42	1496 x 311 x 942	12	13amp	2.64
	KP5H3	5	52	1796 x 311 x 942	15	16amp	3.30
	KP6H3	6	62	2146 x 311 x 942	18	63amp	3.96

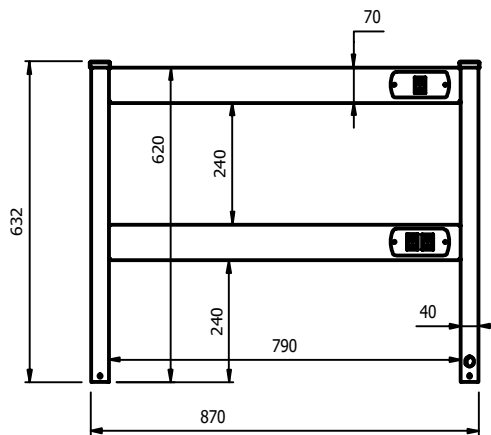
Plan View (size 2 example)



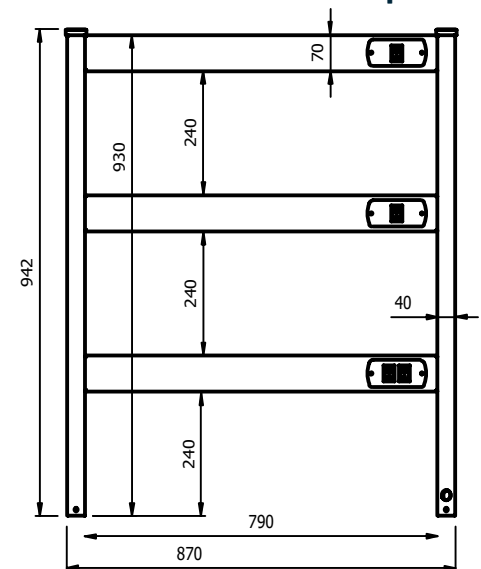
One Tier (size 2 example)



Two Tier (size 2 example)



Three Tier (size 2 example)



MADE IN BRITAIN

E&R Moffat Ltd.  
Bonnybridge  
FK4 2BS  
Scotland

Find us on:



1963 - 2018

www.ermoffat.co.uk  
+44 (0) 1324 812272  
sales@ermoffat.co.uk