

## Overview

Robust over-shelving cleverly designed offering a choice of one, two, or three tiers. Standard lengths are made to suit standard tabling and the Moffat Premier range of hot cupboard and Bainmaries, creating a functional heavy duty kitchen pass. The pass facilitates an easy two-way communication work station between restaurant front of house and the kitchen, where checks are placed and orders processed. Chefs plate up and place on the pass to be served.



Two tier shown with cupboard

## Key Features:

- Flexible choice off one, two, or three, tier design
- Available in four standard lengths
- Standard sizes specific to standard tabling and Moffat Premier units
- Alternative lengths and configuration are available priced on application.
- Heavy duty robust 300mm wide shelving
- Low maintenance, easily cleaned and highly efficient.



Two tier shown with table

## Options:

- Tab grabber (code:- MJG)
- Alternative lengths. POA



One tier shown with table



Three tier shown with cupboard



## Gantry options

Made to suit Standard tabling lengths and Moffat Premier Hot cupboard and Bainmaries.



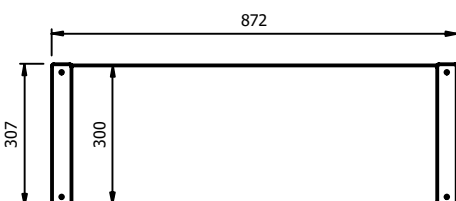
One tier shown with cupboard

	Model	Model Size	Standard Table Length	Weight (kg)	L x W x H (mm)
One Tier	KP2A1	2	900	7	872 x 307 x 312
	KP3A1	3	1200	9	1192 x 307 x 312
	KP4A1	4	1500	12	1492 x 307 x 312
	KP5A1	5	1800	14	1792 x 307 x 312

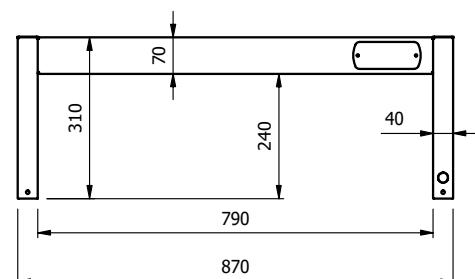
	Model	Model Size	Standard Table Length	Weight (kg)	L x W x H (mm)
Two Tier	KP2A2	2	900	14	872 x 307 x 622
	KP3A2	3	1200	18	1192 x 307 x 622
	KP4A2	4	1500	24	1492 x 307 x 622
	KP5A2	5	1800	28	1792 x 307 x 622

	Model	Model Size	Standard Table Length	Weight (kg)	L x W x H (mm)
Three Tier	KP2A3	2	900	21	872 x 307 x 932
	KP3A3	3	1200	27	1192 x 307 x 932
	KP4A3	4	1500	36	1492 x 307 x 932
	KP5A3	5	1800	42	1792 x 307 x 932

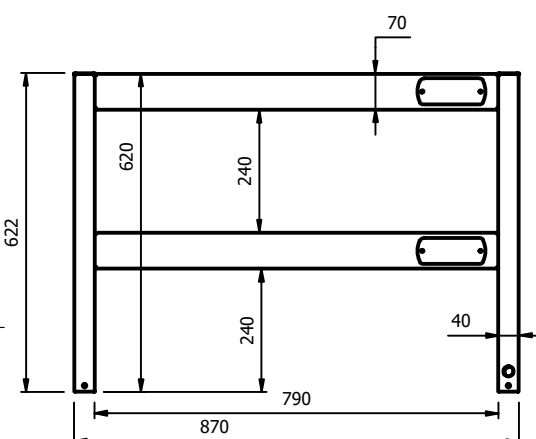
### Plan View (size2 example)



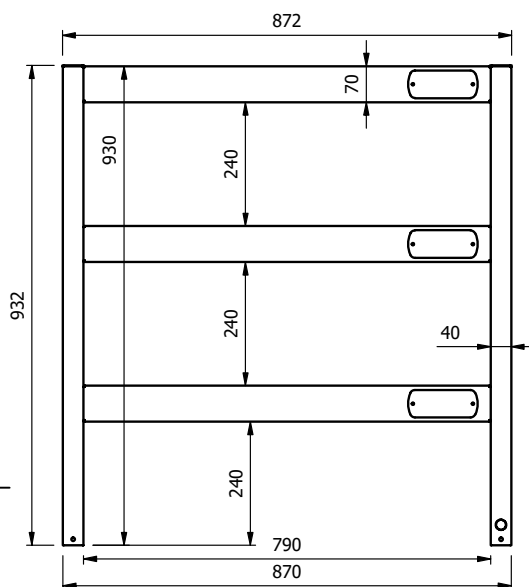
### One Tier (size 2 example)



### Two Tier (size 2 example)



### Three Tier (size 2 example)



MADE IN BRITAIN

E&R Moffat Ltd.  
Bonnybridge  
FK4 2BS  
Scotland



www.ermoffat.co.uk  
+44 (0) 1324 812272  
sales@ermoffat.co.uk