

## Overview

Open basket dispenser with a Pop-Up variable spring system to accommodate different weights of baskets. Lift off top basket and the next one automatically moves up level into position delivering stacked dishwash type baskets holding plates and crockery. This compact mobile unit is perfect for Keeping crockery in one place. Load from the wash-up area & transfer to the point of service. Hygienic design, made of high-quality stainless steel with an enclosed adjustable spring system with heavy duty roller platform guide. Four corner bumpers, protect the equipment on all sides. Ergonomically shaped push pull handles ensure optimal handling. Dispenser runs on all-swivel 5" (125mm) casters of which two are lockable.



Model CBD

## Key Features:

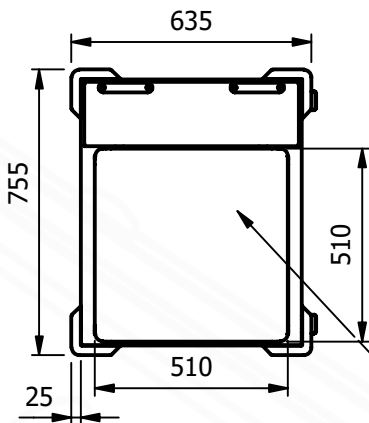
- Working height set at 910mm from floor level
- Basket Platform: 510 × 510 mm
- Stacking height: 600 mm
- Capacity: 8 baskets (75mm deep)  
6 baskets (100mm deep)
- Four swivel castors two with brakes
- Payload: 100 kg



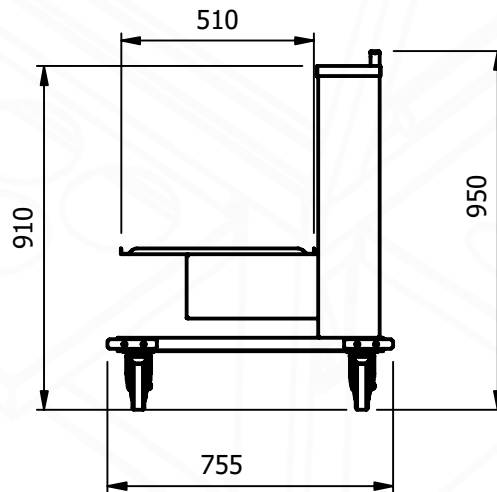
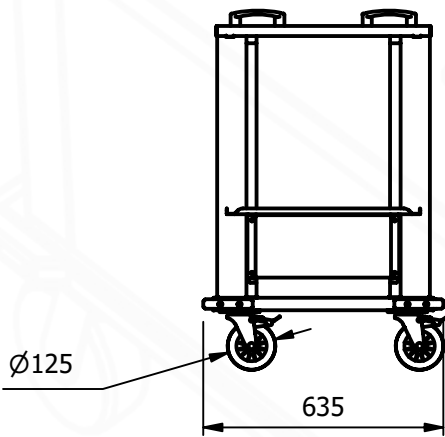
This unit features Moffat's pop-up basket system with a multi-spring, adjustable, floating platform.

**Model CBD**

Length (mm)	Depth (mm)	Height (mm)	Weight (mm)
755	635	950	60



Basket platform 510mm x 510mm



E&R Moffat Ltd.  
Bonnybridge  
FK4 2BS  
Scotland

Find us on:



www.ermoffat.co.uk  
+44 (0) 1324 812272  
sales@ermoffat.co.uk