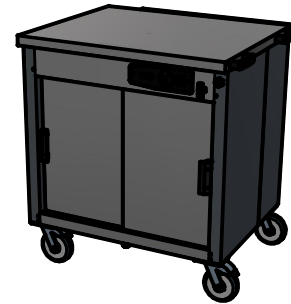
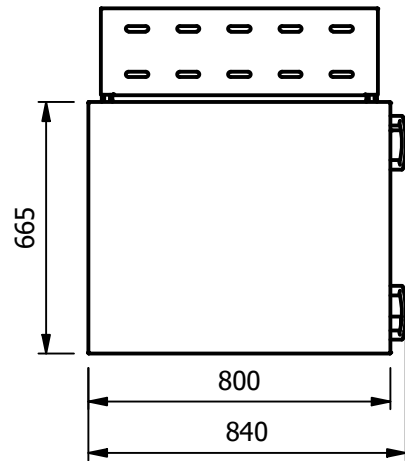
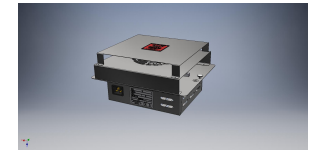


Sahara Fan Model SF309



Moffat Specification

Dry Heat
Fan Assisted Hotcupboard

Dimensions
Length - 840mm
Depth - 665mm (715mm with folded tray rail)
Height - 900mm
Weight - 54kg

Capacity of Hot Cupboard [usable inside space]
Length - 697mm
Depth - 538mm
Usable Height Bottom shelf - 204mm
Usable Height Top Shelf - 265mm

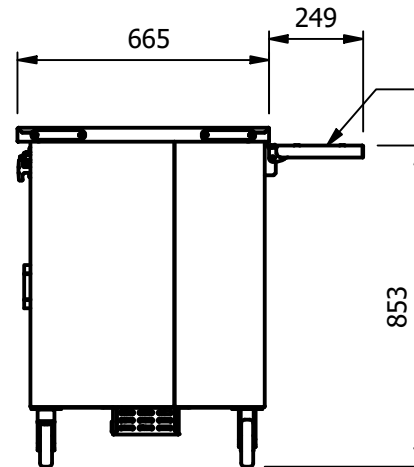
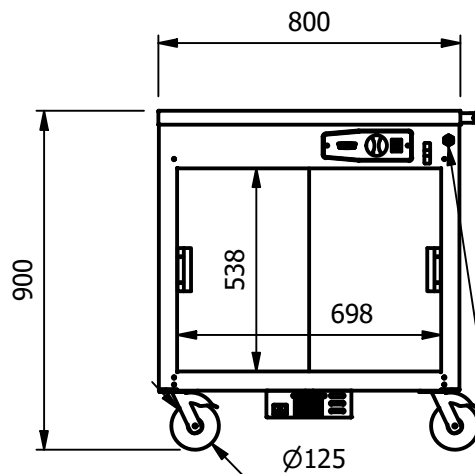
24 covers & meals [10" plated meals stacked using plate covers]
or
72 off 10" plates stacked for heating
or
4 off 1/1GN pans side by side 150mm deep 2 on top 2 on bottom

Power Rating
0.9kw with no gantry, 1.12Kw with heated gantry.
complete with a 2m long cord set & 13amp plug
Removable Fan heating System Sahara Fan Model SF309

Materials
1.2mm 304 Grade St/ Steel Top & Supports
0.7mm 430 Grade St/ Steel Internal Structure
GN 1/1 Grid Shelves with 30mm x 30mm tube supports

Installation
All swivel castors, two braked

Push pull handles on operators right hand side



Optional Tray Slide

POWER CABLE
ENTRY POINT

ALL SHEET METAL DIMENSIONS ARE I/S (INSIDE SIZES) (UNLESS OTHERWISE STATED)

ALL DIMENSIONS IN (mm), TOLERANCE = LINEAR ± 0.5mm, ANGULAR ± 0.5mm (OR AS STATED). ALL SHARP EDGES TO BE REMOVED FROM SHEET METAL PARTS

| | | | | | | | | | | | |
|---|---------------|------|--|-------------|----------|--|--------------|------------|-------|-------|----|
| Product | FOCUS | | | Product No | | | | | | | |
| Description | *** 2FHCM *** | | | | | | | | | | |
| Material/Finish | Thickness | | | Desp/Date | | | | | | | |
| Legacy P/N | Weight | 54kg | | Quote No. | Dwg No. | | UMP-085931-1 | | | | |
| Client | | | | SO Number | STANDARD | | Drawn By | N.Raymen | | | |
| Client Project | | | | Approved By | | | Date | 19/01/2021 | | | |
| E & R MOFFAT LTD, SEABEGS ROAD, BONNYBRIDGE, FK4 2BS, T: +44 (0)1324 812272, E: sales@ermoffat.co.uk, Web: www.ermoffat.co.uk | | | | | | | Scale | 1 : 20 | Sheet | 1 / 2 | A4 |

No reproduction or publication of this drawing may be made, and no article may be manufactured or assembled in accordance with this drawing without prior written consent. This prohibition is a term of any contract relating to this drawing. Rights reserved under the Copyright Act 1956 as amended by the Design Copyright Act 1968.

