

# Premier Electric Heated Units

## Premier Eco Plain Top Hot Cupboard



MODEL	Weight kg	Dimensions L x D x H mm	Electrical Supply	Power Rating kw	PRICE
HC2E	63	884 x 750 x 900	13amp	1.0	£1185
HC3E	78	1212 x 750 x 900	13amp	1.5	£1299
HC4E	95	1540 x 750 x 900	13amp	1.5	£1500
HC5E	111	1868 x 750 x 900	13amp	1.9	£1680
HC6E	130	2196 x 750 x 900	13amp	2.0	£1862

### Optional Extras

#### DOORS BOTH SIDES (Add DBS after code)

Size 2 £313

Size 3 £380

Size 4 £502

Size 5 £568

Size 6 £627

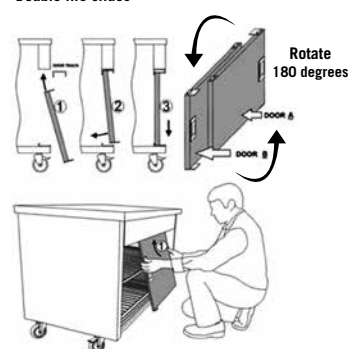
#### Door Locks (all models) £78

Insulated Top £98

**Note:** for easy cleaning all units are fitted with castors as standard

- Heavy duty all stainless steel construction
- Bright polished stainless steel interior
- Fitted two CP rod shelves with heavy duty SS supports Chrome plated
- Flat stainless steel base with no element recess to collect debris
- Base and door track in one piece for easy cleaning
- Stainless steel sliding doors lift off for cleaning and maintenance
- Double life slides
- Doors fitted with heavy duty slides for easy operation and long life
- Fan assisted heating system lifts out for cleaning and maintenance
- Control panel at RH end slides out for ease of installation and maintenance
- Thermostatically controlled hot cupboard with fan assisted removable heating unit, 30°-110°C
- Fitted with 2m long cord and 13amp plug
- Castors fitted as standard
- Feet can be supplied, at no extra cost, but must be stated on order

#### Double life slides



## Premier Eco Wet/Dry Well Bain Marie/Hot Cupboard



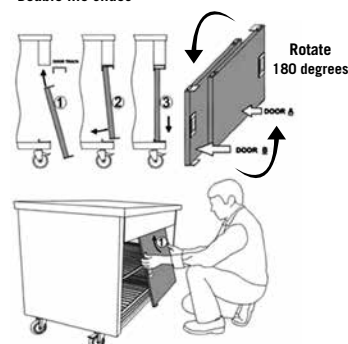
MODEL	Weight kg	Dimensions L x D x H mm	Electrical Supply	Power Rating kw	Cutout for 1/1 Gastronorm Containers	PRICE
HB2E	65	884 x 750 x 900	13amp	2.4	2	£1552
HB3E	81	1212 x 750 x 900	13amp	2.9	3	£1664
HB4E	100	1540 x 750 x 900	13amp	2.9	4	£1912
HB5E	118	1868 x 750 x 900	16amp	3.5	5	£2113
HB6E	138	2196 x 750 x 900	32amp	3.8	6	£2319

Units with a total power rating of 2.9Kw or less will come fitted with a 2 meter cable 13A plug as standard.

**Note:** for easy cleaning all units are fitted with castors as standard

- Heavy duty bain marie / hotcupboard constructed as premier hotcupboard
- Bain Marie top in stainless steel with opening well to take gastronorm containers
- Bain Marie opening has a raised lip all round to prevent the ingress of debris into the well and to make it easy to remove the gastronorm pans (no need to use implements to raise the pan edge for lifting).
- Unprecedented even flow of hot air re-circulates throughout the unit
- Bain Marie = 3 position energy regulator
- Modern insulating methods help keep running costs low reducing the carbon footprint
- Features satin and bright polished stainless steel
- Thermostatically controlled hot cupboard with fan assisted removable heating unit, 30°-110°C
- Castors fitted as standard
- Feet can be supplied, at no extra cost, but must be stated on order

#### Double life slides



### Premier Units

- All base units are supplied with a cable and plug including the non 13amp models- which are supplied with 16 amp and 32 amp single phase commando plugs
- Please note : When gantries are added this is a special requirement such as an HB4E & O2H15. Will affect total loading differing from that shown above. Electrical power cable requirement must be stated on the order

### Optional Extras

#### DOORS BOTH SIDES (Add DBS after code)

Size 2 £313

Size 3 £380

Size 4 £502

Size 5 £568

Size 6 £627

#### Door Locks (all models) £78

Insulated Top £98