

POWER CABLE ENTRY POINT

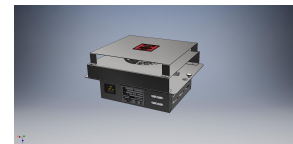
Moffat Specification

Dimensions
 Width - 1486mm
 Depth - 680mm
 Height - 1443mm
 Weight - 95kg

Gantry
 2 off Quartz heat lamps 500w each

Bainmarie well for Vegetables and Sauces etc
 Dry heat with a raised lip designed to hold Gastronorm pans.
 Heats via residual heat from the hot cupboard fan and the carving pad element.
 Note:- Pans and lids are supplied
 Capacity:- Three GN1/3 pans with Lids and Two GN1/6 pans with lids.

Hotcupboard
 Dry heat fan assisted hot cupboard
 Capacity:- [usable inside space]
 Width - 950mm
 Depth - 555mm
 Usable Height Bottom shelf - 204mm
 Usable Height Top Shelf - 245mm



Sahara Fan Model SF309

Carvery Pads
 Two spiked heavy duty pads with an anti drip edge all round for carving and display
 Capacity:- 2 off 420mm x 328mm

Plate Dispenser
 Pop up self leveling system complete with a lid.
 Heats via residual heat from the hot cupboard fan and the carving pad element.
 Capacity:- Can accommodate any size or shaped plate or dish that will fit within a 300mm [12"] Square. Holds around 65 plates depending on thickness and shape

Power Rating
 2.9kw
 complete with a 2m long cord set & 13amp plug
 Removable Fan heating System Sahara Fan Model SF309

Materials
 1.2mm 304 Grade St/ Steel Top & Supports
 0.7mm 430 Grade St/ Steel Internal Structure
 GN 1/1 Grid Shelves with 30mm x 30mm tube supports

Installation
 All swivel castors, two braked

ALL SHEET METAL DIMENSIONS ARE I/S (INSIDE SIZES) (UNLESS OTHERWISE STATED) ALL DIMENSIONS IN (mm), TOLERANCE = LINEAR ± 0.5mm, ANGULAR ± 0.5mm (OR AS STATED). ALL SHARP EDGES TO BE REMOVED FROM SHEET METAL PARTS

Product	VERSICARTE			Product No	N/A		
Description	*** VC4CS ***						
Material/Finish	Thickness		Desp/Date				
Legacy P/N	Weight	95kg	Quote No.		Dwg No.	VCP-061278	Issue
Client			SO Number	STANDARD	Drawn By	ABB	-
Client Project			Approved By		Date	28/10/2019	

No reproduction or publication of this drawing may be made, and no article may be manufactured or assembled in accordance with this drawing without prior written consent. This prohibition is a term of any contract relating to this drawing. Rights reserved under the Copyright Act 1956 as amended by the Design Copyright Act 1968.

