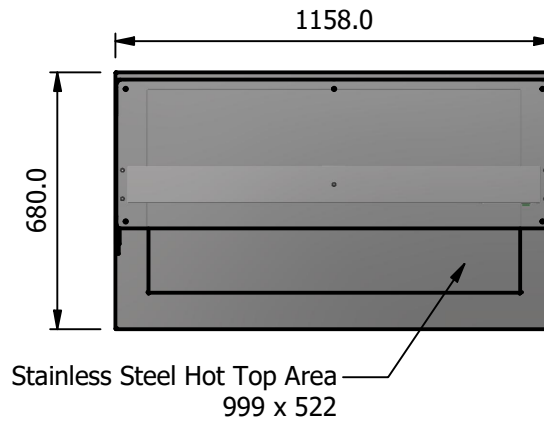


NOTE:- Serving height for children up to 12 years of age. This model is available with a work top height of 800mm and a Trayslide height of 773mm. Please add "B" to the end of the product code.



**Moffat Specification**

Solid hot Top

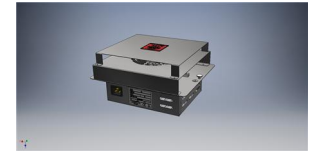
The Stainless Steel recessed top provides a clean hot serving area, via a solid state element fitted internally below, additional excess residual hot air from the hot cupboard is also used to maintain temperature which gives energy saving efficiency.

Dry Heat

Fan Assisted Hotcupboard

Dimensions

Width - 1158mm  
Depth - 680mm  
Height - 900mm  
Weight - 67kg



Sahara Fan Model SF309

Area of hot top

999mm x 522mm

Capacity of Hot Cupboard [usable inside space]

Width - 1023mm  
Depth - 555mm  
Usable Height Bottom shelf - 204mm  
Usable Height Top Shelf - 245mm

35 covers & meals [10" plated meals stacked using plate covers]  
or  
133 off 10" plates stacked for heating  
or  
6 off 1/1GN pans side by side 150mm deep 3 on top 3 on bottom

Power Rating

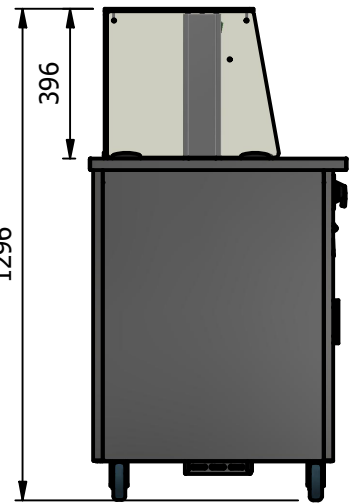
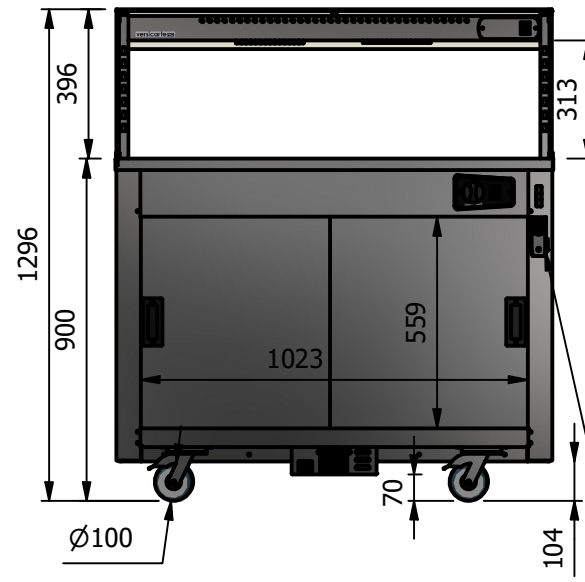
1.90kw with no gantry, 2.34Kw with heated gantry.  
complete with a 2m long cord set & 13amp plug  
Removable Fan heating System Sahara Fan Model SF309

Materials

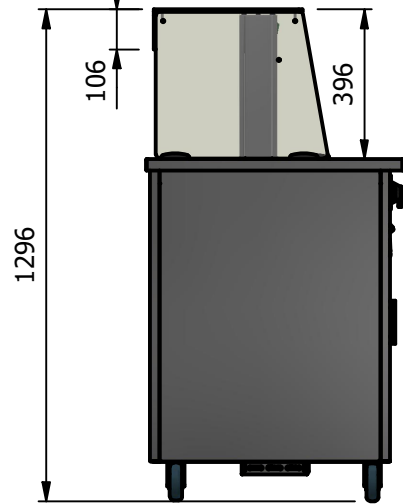
1.2mm 304 Grade St/ Steel Top & Supports  
0.7mm 430 Grade St/ Steel Internal Structure  
GN 1/1 Grid Shelves with 30mm x 30mm tube supports

Installation

All swivel castors, two braked



Square Glass Closed Front



Square Glass Open Front

ALL SHEET METAL DIMENSIONS ARE I/S (INSIDE SIZES) (UNLESS OTHERWISE STATED)

ALL DIMENSIONS IN (mm), TOLERANCE = LINEAR ± 0.5mm, ANGULAR ± 0.5mm (OR AS STATED). ALL SHARP EDGES TO BE REMOVED FROM SHEET METAL PARTS

Product	VERSICARTE		Product No	N/A		 The Catering Equipment Company			
Description	*** VC3HTSSL *** Square Glass Options		<small>No reproduction or publication of this drawing may be made, and no article may be manufactured or assembled in accordance with this drawing without prior written consent. This prohibition is a term of any contract relating to this drawing. Rights reserved under the Copyright Act 1956 as amended by the Design Copyright Act 1968.</small>						
Material/Finish	Thickness		Desp/Date			Dwg No.	VCP-066047	Issue	
Legacy P/N	Weight	67kg	Quote No.			Drawn By	ABB	-	
Client			SO Number	STANDARD		Date	04/07/2023		
Client Project			Approved By			Scale	1 : 20	Sheet	
E & R MOFFAT LTD, SEABEGS ROAD, BONNYBRIDGE, FK4 2BS, T: +44 (0)1324 812272, E: sales@ermoffat.co.uk, Web: www.ermoffat.co.uk								1 / 2	<b>A4</b>