

Overview

Mobile Storage cupboards with sliding doors.
Based on gastronorm GN1/1 pans available in four lengths. Compact high capacity units. A robust stainless-steel construction with a solid plain top. Excellent storage for plates and dishes.



Note:

Low height models are available set at 800mm high.
Ideal for children up to 12 years.
These low height models have a "B" added to the model code.

Key Features:

- Doors are very easily removed for cleaning
- Sliding doors have unique double life skid pads doors can be fully rotated and reinserted allowing the spare skid pads to be used offering a long and trouble-free service
- Easy lift out GN1/1 size multiple grid shelving, and heavy-duty supports
- 4 models in the range holding 2 to 5 GN 1/1 gastronorm type containers.
- Mobile all swivel castors two with brakes

Options:

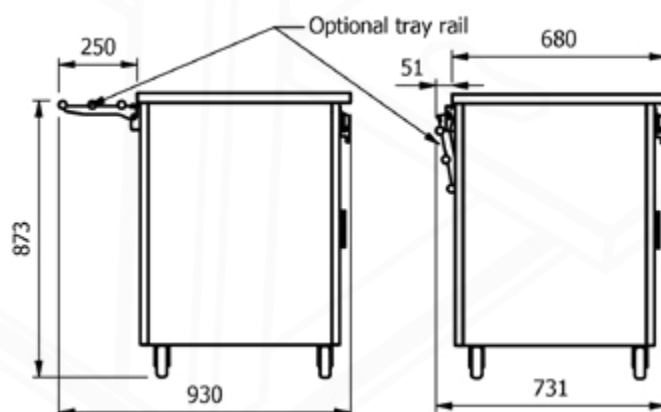
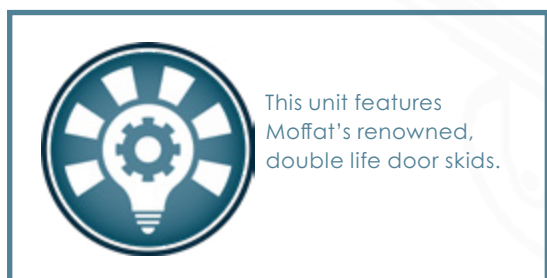
- Various heated / illuminated overhead gantry options
- Wide choice of coloured outer panels (durable plastic coated steel)
- Fold down solid tray slide or tubular tray rail

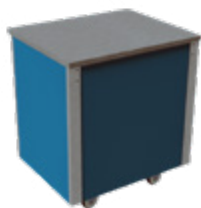
Optional solid tray slide

| Model | Matching unit size |
|-------|--------------------|
| VC2TS | 2 |
| VC3TS | 3 |
| VC4TS | 4 |
| VC5TS | 5 |

Optional tubular tray rail

| Model | Matching unit size |
|-------|--------------------|
| VC2TR | 2 |
| VC3TR | 3 |
| VC4TR | 4 |
| VC5TR | 5 |

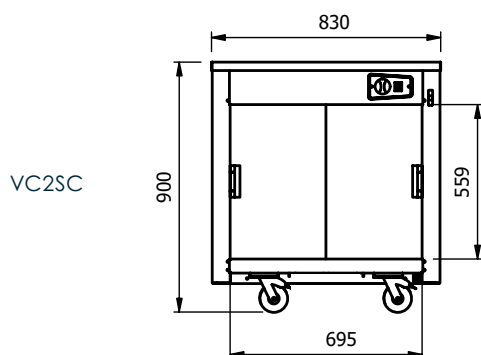




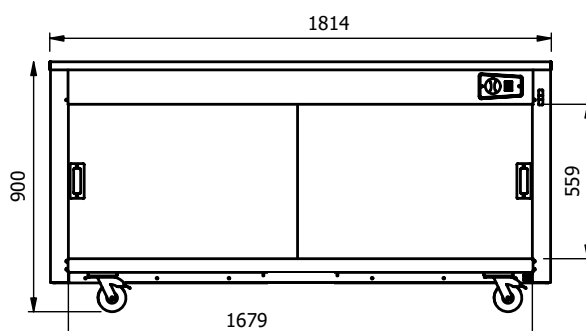
| | Model | GN 1/1 Capacity | Weight (kg) | L x W x H (mm) |
|------------------------|-------|-----------------|-------------|------------------|
| Base Unit No Gantry | VC2SC | 2 | 30 | 830 x 680 x 900 |
| | VC3SC | 3 | 45 | 1158 x 680 x 900 |
| | VC4SC | 4 | 60 | 1486 x 680 x 900 |
| | VC5SC | 5 | 75 | 1814 x 680 x 900 |

Cupboard Capacity:

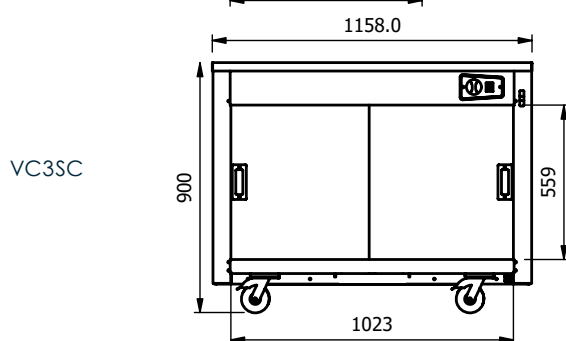
| Model Code | 10" plates Stacked using plate covers | 10" plates stacked | Internal Length (mm) | Internal Depth (mm) | Usable Height of Bottom Shelf (mm) | Usable Height of Top Shelf (mm) | GN Pans side by side, 150mm deep |
|------------|---------------------------------------|--------------------|----------------------|---------------------|------------------------------------|---------------------------------|----------------------------------|
| VC2SC | 25 covers/meals | 95 | 695 | 555 | 204 | 245 | Top: 2 Bottom: 2 |
| VC3SC | 35 covers/meals | 133 | 1023 | 555 | 204 | 245 | Top: 3 Bottom: 3 |
| VC4SC | 50 covers/meals | 190 | 1351 | 555 | 204 | 245 | Top: 4 Bottom: 4 |
| VC5SC | 60 covers/meals | 228 | 1679 | 555 | 204 | 245 | Top: 5 Bottom: 5 |



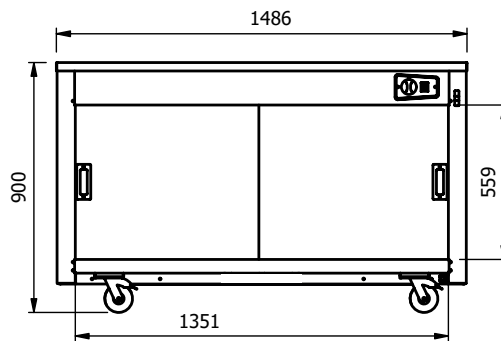
VC2SC



VC5SC



VC3SC



VC4SC



E&R Moffat Ltd.
Bonnybridge
FK4 2BS
Scotland

Find us on:



www.ermoffat.co.uk
+44 (0) 1324 812272
sales@ermoffat.co.uk