



Catering Equipment



**Merchandisers**

*New "Free Flow, Grab & Go" Service*

# MHC1 Heated & Chilled



## Function:

- Presenting both hot and cold food in complementary displays
- Offering a complete meal deal within a small foot print
- Displays pre-heated and pre-chilled food at regulated temperatures

## Controls:

- Accurate digital controls ensure constant air flow both hot and cold
- Hot food maintained at 65°C to 75°C, chilled maintained at 2°C to 5°C
- Independent illumination on / off switches
- Internal refrigeration condensate self-evaporation system

## Display Features:

- Full length LED lighting provides striking presentation
- 4 fully adjustable and removable rod shelves, sloping or horizontal
- Complete with heavy duty stainless steel price tag / info holders

## Hygiene and Safety:

- Mobile with front brakes allow stress-free maintenance and cleaning
- Ergonomic handles at the rear for easy manoeuvrability
- Constructed from 304 and 430 grade bright polished stainless steel
- All glass 6mm toughened
- High-grade insulation improves temperature retention
- Coated evaporator coils provide longer life and hygiene



\*Thermal image showing display temperatures. Shelves have been shaded for illustration.

Model Code	Width (mm)	Depth (mm)	Height (mm)	Weight (kg)	Power Rating (kw)	Capacity (m³)
MHC1	650	680	1825	145	2.8	2 x heated/0.06 3 x chilled/0.08
MHC1D (with Rear Doors)				155		

# MH1 Heated



## Function:

- Perfect for holding paninis, pasties, soup etc.
- Displays pre-heated food at regulated temperatures

## Controls:

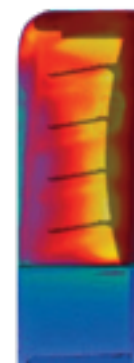
- Accurate, digital controls concealed behind hinged flap
- Hot food maintained at 65°C to 75°C
- Independent illumination on / off switch

## Display Features:

- Full length LED lighting provides striking presentation
- 4 fully adjustable and removable rod shelves, sloping or horizontal
- Complete with heavy duty stainless steel price tag / info holders

## Hygiene and Safety:

- Mobile with front brakes allow stress-free maintenance and cleaning
- Ergonomic handles at the rear for easy manoeuvrability
- 304 and 430 grade bright polished stainless steel
- All glass 6mm toughened
- High-grade insulation improves temperature retention



\*Thermal image showing display temperatures. Shelves have been shaded for illustration.

Model Code	Width (mm)	Depth (mm)	Height (mm)	Weight (kg)	Power Rating (kw)	Capacity (m³)
MH1	650	680	1825	102	2.8	4 x heated/0.14
MH1D (with Rear Doors)				112		

# MC1 Chilled

## Function:

- Perfect for sandwiches, filled rolls, dairy products, and drinks etc.
- Displays pre-chilled food at regulated temperatures

## Controls:

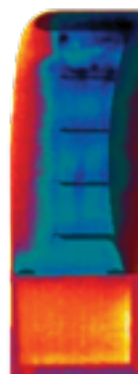
- Accurate, digital controls concealed behind hinged flap
- Gentle air-flow system maintains food in a fresh condition
- Displayed products maintained at 2°C to 5°C
- Independent illumination on / off switch
- Internal condensate self-evaporation system

## Display Features:

- Full length LED lighting provides striking presentation
- 4 fully adjustable and removable glass shelves, sloping or horizontal
- Complete with heavy duty stainless steel price tag / info holders

## Hygiene and Safety:

- Mobile with front brakes allow stress-free maintenance and cleaning
- Ergonomic handles at the rear for easy manoeuvrability
- Constructed from 304 and 430 grade bright polished stainless steel.
- All glass 6mm toughened
- High-grade insulation improves temperature retention
- Coated evaporator coils provide longer life and hygiene



\*Thermal image showing display temperatures. Shelves have been shaded for illustration.



Model Code	Width (mm)	Depth (mm)	Height (mm)	Weight (kg)	Power Rating (kw)	Capacity (m <sup>3</sup> )
MC1	650	680	1825	136	2.2	5 x chilled/0.14
MC1D (with Rear Doors)				146		

# MA1 Ambient

## Function:

- Complimentary ambient display cabinet
- Ideal for confectionary, biscuits, doughnuts and crisps etc.

## Controls:

- LED light switch concealed behind hinged flap

## Display Features:

- Full length LED lighting provides striking presentation
- 4 fully adjustable and removable rod shelves, sloping or horizontal
- Complete with heavy duty stainless steel price tag / info holders

## Hygiene and Safety:

- Mobile with front brakes allow stress-free maintenance and cleaning
- Ergonomic handles at the rear for easy manoeuvrability
- Constructed from 304 and 430 grade bright polished stainless steel
- All glass 6mm toughened



Model Code	Width (mm)	Depth (mm)	Height (mm)	Weight (kg)	Power Rating (kw)	Capacity (m <sup>3</sup> )
MA1	650	680	1825	97	0.15	4 x ambient/0.14
MA1D (with Rear Doors)				107		



Optional pull-down blind for chilled section  
(code "NB1")



Optional rear, double-glazed doors



Full length, lateral LED illumination as standard



#### Stelvetite Panel Colour Option (must be specified at time of order)

Black	Pacific Blue	Poppy Red	Academy Maple**
Merlin Grey	Ocean Blue	Aztec Yellow	American Natural**
Goosewing Grey	Forest Green	Buttermilk	Mahogany**
Navy	Willow	Bamboo	
Regatta Blue	Vandyke Brown	White	
Wedgewood Blue	Terracotta	Stainless Steel*	

\*Default colour Stainless Steel

\*\*Extra cost applies to these finishes

Optional impulse basket (code "MIB")



E&R Moffat Ltd.  
Bonnybridge  
FK4 2BS  
Scotland



[www.ermoffat.co.uk](http://www.ermoffat.co.uk)  
+44 (0) 1324 812272  
[sales@ermoffat.co.uk](mailto:sales@ermoffat.co.uk)