

## Overview

Chilled display units specially designed to safely hold quick-turnaround, pre-chilled food products at optimum serving temperatures incorporating a recessed frosted top. Frost Tops keep pre-chilled snacks, hors d'oeuvres, side dishes and beverages cool and ready to serve. The unique Moffat innovative contact cooling system provides a frosted chilled display area with a surface temperature between -1 and -5. The recessed area can accommodate 1/1GN trays, this allows a simple and easy method of handling and restocking of food products. Self-contained units with accurate digital control, high pressure warning, and a drain which has a shut off valve. The drain pipe can be connected into the main waste system or alternatively simply place a suitable vessel under to catch the excess water after service. The Refrigeration System is housed underneath in a tidy compact cradle. Utilising a highly efficient, naturally occurring, hydrocarbon refrigeration gas type R290 (as standard). Hermetically sealed, reducing the carbon footprint and energy consumption.

Optional overhead gantry's have LED illumination.

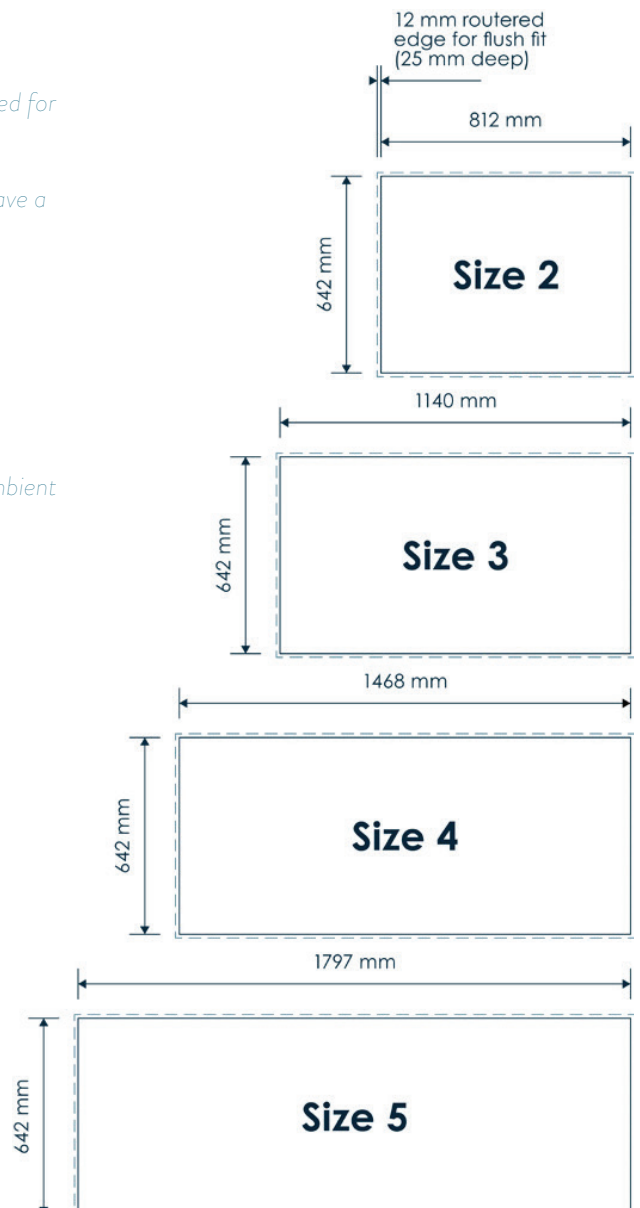
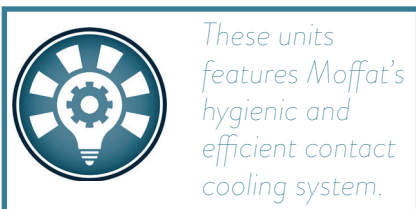


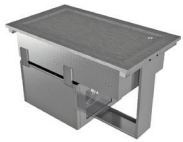
## Features:

- Size 3, 4, and 5 models have the condensing unit set at 90°. Removing the need for vents in the front panels of serveries and counters.
- Size 2 models have straight through type refrigeration as standard and must have a front and rear vent.
- Accommodates 1/1 trays [not supplied].
- Digital thermostat and temperature control.
- Gantry's have Long life, low energy LED's.
- Maintaining the core product temperature of pre-chilled food below 5°C in ambient condition not exceeding 25°C and 60% relative humidity.
- Drain with shut off valve, 24 hour operation. Fully insulated.
- Supplied with 2m long power cord and 13amp plug [13A 230v 50Hz]
- Plenum duct to aid on-site ventilation and installation.

### Options:

- Double sided Island Glass Curved or Shear line type
- Additional air flow kit [In-line fan and flexi-duct kit for difficult non-standard installations] (Code: DRAF)





1. No Gantry



2. Curved Glass



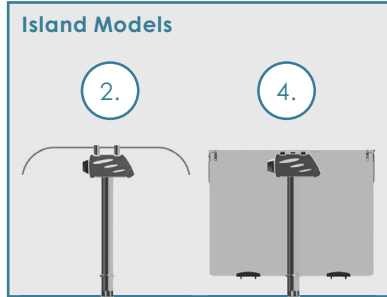
3. Curved Closed Front



4. Square Glass



5. Squared Closed front



6. Curved Deli



7. Square Deli

	Model	Weight (kg)	L x W (mm)	Height above display top	GN 1/1 Capacity	LED Lights	Electrical Supply	Power Rating (kw)
1. No Gantry	D2FTNG	50	830 x 660	25	2	N/A	13amp	1.0
	D3FTNG	60	1158 x 660	25	3	N/A	13amp	1.0
	D4FTNG	70	1486 x 660	25	4	N/A	13amp	1.0
	D5FTNG	80	1814 x 660	25	5	N/A	13amp	1.0
2. Curved Glass Open Front	D2FT	60	830 x 660	408	2	Yes	13amp	1.0
	D3FT	70	1158 x 660	408	3	Yes	13amp	1.0
	D4FT	85	1486 x 660	408	4	Yes	13amp	1.0
	D5FT	90	1814 x 660	408	5	Yes	13amp	1.0
(+ "I" to end of model code for island model with double sided, curved glass screen)								
3. Curved Glass Closed Front	D2FTF	70	830 x 660	408	2	Yes	13amp	1.0
	D3FTF	80	1158 x 660	408	3	Yes	13amp	1.0
	D4FTF	95	1486 x 660	408	4	Yes	13amp	1.0
	D5FTF	105	1814 x 660	408	5	Yes	13amp	1.0
4. Square Glass Open Front	D2FTSL	60	830 x 660	396	2	Yes	13amp	1.0
	D3FTSL	70	1158 x 660	396	3	Yes	13amp	1.0
	D4FTSL	85	1486 x 660	396	4	Yes	13amp	1.0
	D5FTSL	95	1814 x 660	396	5	Yes	13amp	1.0
(+ "I" to end of model code for island model with double sided, square glass screen)								
5. Square Glass Closed Front	D2FTSLF	70	830 x 660	396	2	Yes	13amp	1.0
	D3FTSLF	85	1158 x 660	396	3	Yes	13amp	1.0
	D4FTSLF	95	1486 x 660	396	4	Yes	13amp	1.0
	D5FTSLF	105	1814 x 660	396	5	Yes	13amp	1.0
6. Curved Glass Deli (shelf not chilled)	D2FTD	70	830 x 660	540	2	Yes	13amp	1.0
	D3FTD	75	1158 x 660	540	3	Yes	13amp	1.0
	D4FTD	85	1486 x 660	540	4	Yes	13amp	1.0
	D5FTD	95	1814 x 660	540	5	Yes	13amp	1.0
7. Square Glass Deli (shelf not chilled)	D2FTDSL	70	830 x 660	540	2	Yes	13amp	1.0
	D3FTDSL	80	1158 x 660	540	3	Yes	13amp	1.0
	D4FTDSL	90	1486 x 660	540	4	Yes	13amp	1.0
	D5FTDSL	105	1814 x 660	540	5	Yes	13amp	1.0



MADE IN BRITAIN

 E&R Moffat Ltd.  
 Bonnybridge  
 FK4 2BS  
 Scotland

Find us on:



1963 - 2018

 www.ermoffat.co.uk  
 +44 (0) 1324 812272  
 sales@ermoffat.co.uk