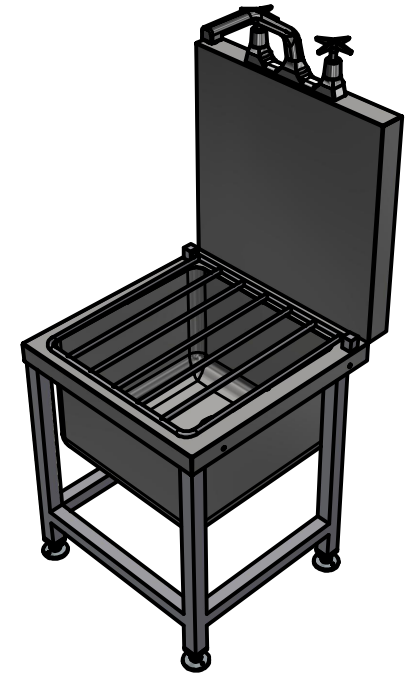
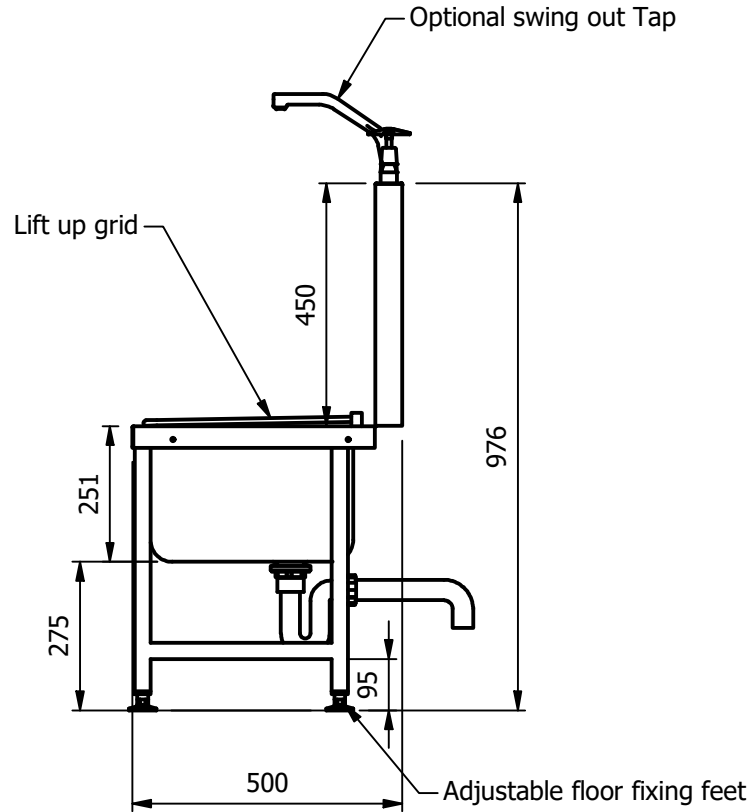
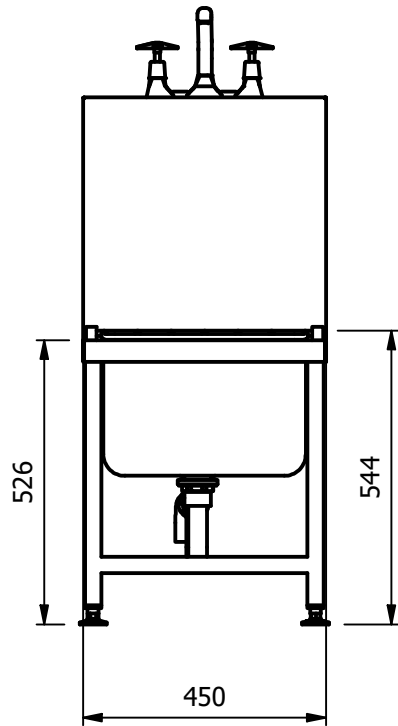


BOWL  
375x375x250 DEEP



**Moffat Specification**

Dimensions

- Width - 450mm
- Depth - 500mm
- Height - 976mm (526mm to sink top)
- Weight - 20kg

Features

- Heavy duty 375mm x 375mm x 250mm deep sink bowl
- Hinged stainless steel rod type bucket grating
- Four adjustable for level floor fixing feet.

Materials


1.2mm 304 Grade St/ Steel Top & Supports  
Framework 30 x 30 430 grade St/Steel

Installation

floor fixing

ALL SHEET METAL DIMENSIONS ARE I/S (INSIDE SIZES) (UNLESS OTHERWISE STATED)

ALL DIMENSIONS IN (mm), TOLERANCE = LINEAR ± 0.5mm, ANGULAR ± 0.5mm (OR AS STATED). ALL SHARP EDGES TO BE REMOVED FROM SHEET METAL PARTS

Product	FABRICATION			Product No				
Description	CSU							
Material/Finish	Thickness		Desp/Date					
Legacy P/N	Weight	20kg	Quote No.					
Client			SO Number	N/A	Dwg No.	140701-1	Issue	
Client Project			Approved By		Drawn By	A.Burns		
E & R MOFFAT LTD, SEABEGS ROAD, BONNYBRIDGE, FK4 2BS, T: +44 (0)1324 812272, E: sales@ermoffat.co.uk, Web: www.ermoffat.co.uk					Date	14/08/2023		
					Scale	1 : 14	Sheet	1 / 2
								<b>A4</b>

No reproduction or publication of this drawing may be made, and no article may be manufactured or assembled in accordance with this drawing without prior written consent. This prohibition is a term of any contract relating to this drawing. Rights reserved under the Copyright Act 1956 as amended by the Design Copyright Act 1968.